



Oct 15, 2025

# AI Beyond Hype:

## How the 5P's Are Making AI in Healthcare Real

Precision | Prediction | Personalization | Population | Prevention



**Nias Puthenveetil**

Founder & CEO | Pyramidz

# AI at the Crossroads

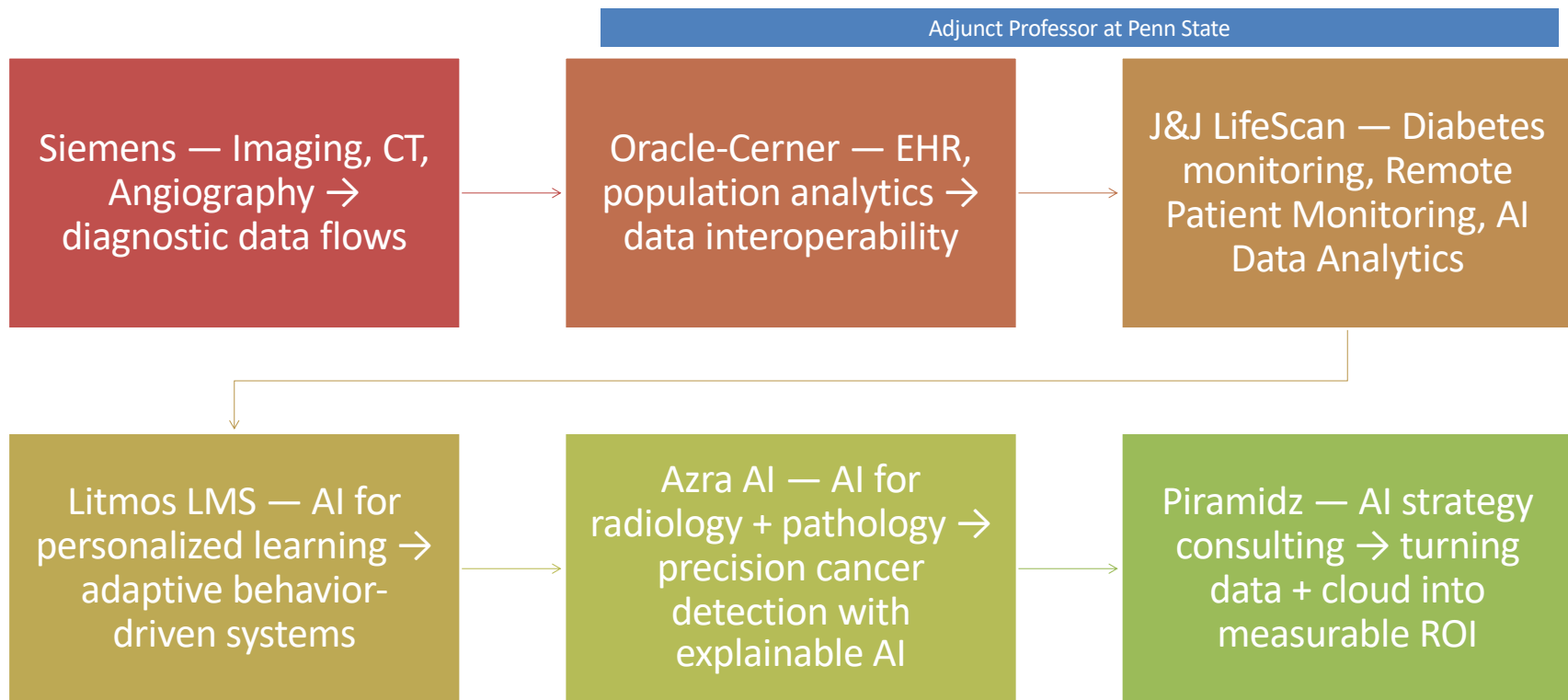
AI promises transformation—but adoption remains patchy.

EHR modernization consumes budgets yet delivers limited ROI.

From 'electronic health records' to 'intelligent health engines': the next leap requires AI with explainability, precision, and purpose.

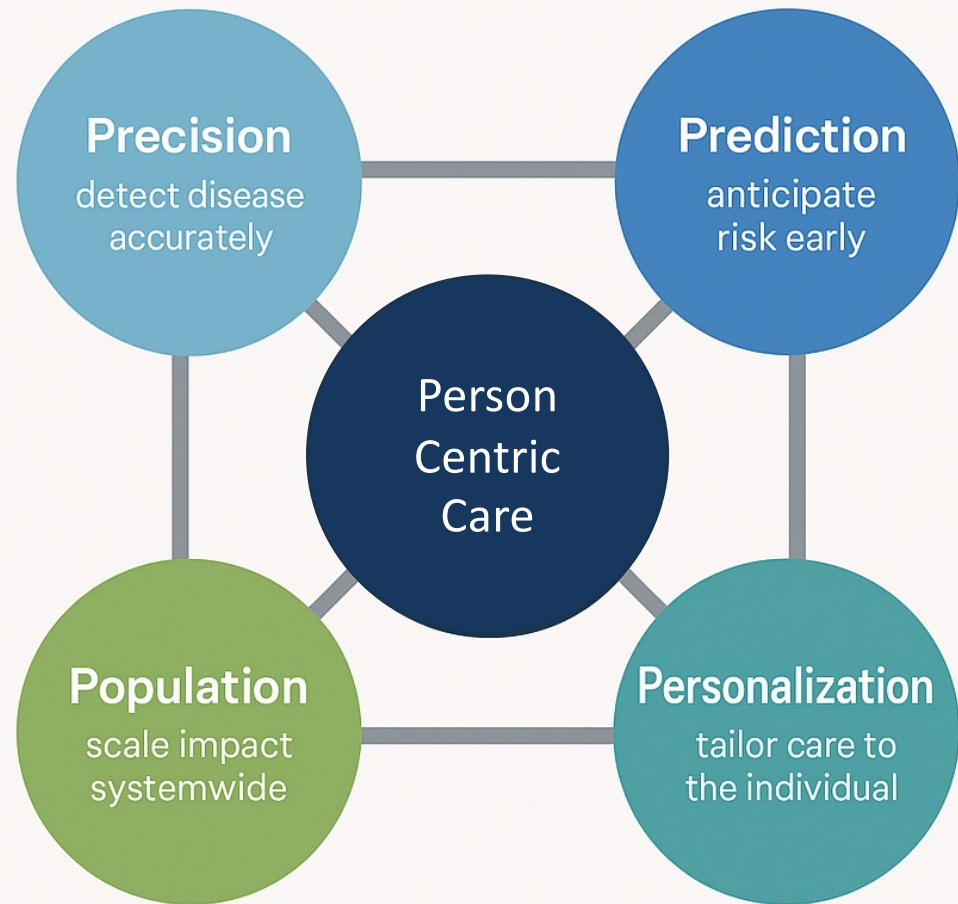
Goal: Reframe AI from hype to health impact.

# My Journey Across Healthcare & Technology



# The 5P Framework for Healthcare AI

The 5Ps bridge clinical excellence and strategic execution



**Prevention** – keep ~~patients~~ <sup>people</sup> healthy and reduce cost

# Precision in Practice: Cancer Detection

Built transformer-based AI models for radiology and pathology image interpretation.

Trained on over 10 million clinical reports – Pathology and Radiology

Validation Metrics: Precision = 0.93 | Recall = 0.89 | F1 Score = 0.91.

Early diagnosis, consistent coding, clinician trust.

Explainability via visual heatmaps and linguistic explanations.

# Prediction: Seeing Around the Corner

Predict disease progression and recurrence using multimodal data.

Use case: predictive modeling reduced unplanned readmissions by 18%.

Integrating prediction into EHR workflows turns data into foresight.

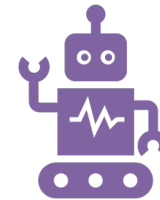
# Personalization: AI That Adapts to People



From mass protocols to individualized insights.



Adaptive learning improved clinician skill retention by 38%.



In clinical AI, personalization means context-aware recommendations rooted in each patient's unique journey.

## Population Health: Scaling Insight Across Health Systems



Registry-driven analytics reveal patterns across demographics and geographies.



AI used to flag incidental findings → link to care pathways.



Partnership between AI models and public-health strategy prevents late-stage diagnoses.

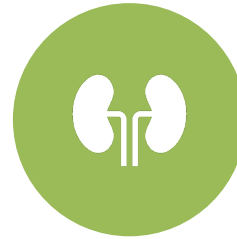


Population health: identify high-risk cohorts through EHR + imaging signals.

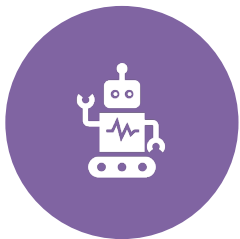
## Prevention: Proactive Healthcare



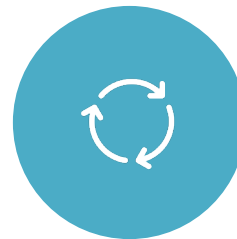
Continuous monitoring and predictive screening.



Example: Incidentals pipeline found early lung, liver, and pancreatic abnormalities.



**Goal:** Move from sick-care to preventive care through AI-enabled alerts and longitudinal tracking.



Shift from reactive to predictive and preventive care.

# Explainable AI & Trust — The True Differentiator



Black-box AI fails in healthcare without explanation.



Explainable AI builds trust and adoption:



Visual justifications (radiology overlays)



Natural-language rationales for pathology findings



Confidence scores + model cards



Transparency = bridge between innovation and adoption.

# Beyond Models: The Intelligent, AI-Enabled EHR

EHRs are no longer sunk costs—they're strategic assets.

AI transforms the EHR into a predictive, self-learning engine: Agentic AI

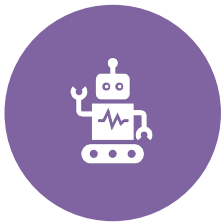
Automates documentation (Mayo Clinic NVA case)

Predicts denials, optimizes revenue cycle (UChicago case)

Improves staff productivity and burnout (Hackensack Meridian)

CFOs now lead AI adoption because ROI is measurable.

# From Hype to Healing: A Call to Action



AI IS NOT REPLACING  
CLINICIANS—IT'S  
AMPLIFYING HUMAN  
INTELLIGENCE.



TRUST, GOVERNANCE,  
AND EXPLAINABILITY  
DRIVE SUSTAINABLE  
IMPACT.



THE 5P FRAMEWORK +  
INTELLIGENT EHR =  
FOUNDATION FOR NEXT-  
DECADE HEALTHCARE.



THE FUTURE OF  
HEALTHCARE IS  
INTELLIGENT, ETHICAL,  
AND EXPLAINABLE.

# The ROI of Responsible AI

AI governance ensures accountability and privacy.

Define success metrics: precision, recall, F1, clinician trust.

Explainability improves adoption → measurable ROI.

CFOs and clinicians align when AI demonstrates outcomes within 90 days.

Responsible AI is not a cost center—it's a competitive advantage.



nias@piramidz.com



# ROOTS TO RISE

LEADERSHIP LESSONS FROM  
A GLOBAL JOURNEY



NIAS  
PUTHENVEETIL